

Flange Anchor FA6002814

Product information



Anchor point with large opening, designed to be fixed on walls, ceilings, rooftops.

- Ideal for use with an anchorage hook with large gate opening, such as telescopic pole anchorage hook (FA 60 016 02, FA 60 016 06), FA 50 207 55, FA 50 208 60.
- Two holes for fixing. Positioning through 2 fastenings Ø13 mm (chemical or mechanical pins, Stainless steel screw and nut system) in steel structure, or concrete.
- Can be installed in any way, can be used in the 3 directions (horizontally, vertically, diagonally).

Anchoring: Type A

[... Read more](#)

Material: Steel, Stainless steel, Aluminium

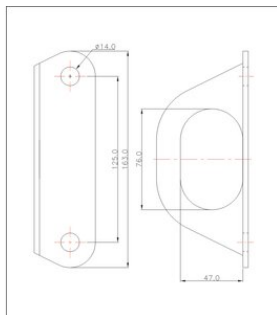
Marking: According to standard

Temperature range: -30°C up to +50°C

Standard: EN 795-A

Flange Anchor FA6002814

Blueprint



Technical data

Part code	Min. breaking force kN	Max. number of persons	Opening mm	Weight kg
8415F6002814	23	1	47 x 76	0.31