

## HHJ S Hollow Plunger Hydraulic Cylinder

### Product information



Holmatro hollow plunger cylinders (HHJ) – Gravity, spring or hydraulic

#### Unique specifications:

- Compact
- Suitable for pulling, lifting, tensioning in all positions
- Protected against ejection of the plunger
- Hollow saddle; prevents damage to the plunger
- Protected against over pressure on return side; A418 valve
- Max. working pressure: 720 bar/ 72 Mpa

#### Gravity & spring return standard supplied with:

- High flow female coupler A118
- Hollow saddle (with the exception of the HHJ30G5, HHJ5S2.5, HHJ12S5 and HHJ12S15)

#### Hydraulic return standard supplied with:

- High flow female coupler A118 on inlet port
- High flow female coupler with pressure relief valve A418 on outlet port
- Hollow saddle

#### Also available:

- Hydraulic pump units 700bar to control your system
- Hydraulic hoses 700bar
- System components to complete your hydraulic system

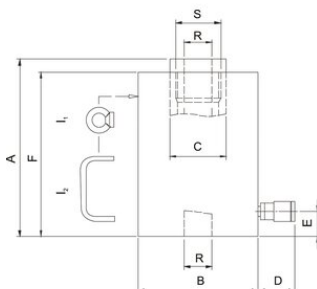
... [Read more](#)

---

**Material:** Steel

## HHJ S Hollow Plunger Hydraulic Cylinder

### Blueprint



### Technical data

Part code	Code	WLL ton	stroke length mm	Closed height mm	required oil cc	Weight kg
5211100111002	HHJ 5 S 2.5	5	25	87	19	1.9
5211100111021	HHJ 12 S 5	12	50	156	88	6.3
5211100111029	HHJ 12 S 15	12	150	298	264	11
5211100112033	HHJ 20 S 5	20	50	182	156	8.6
5211100112030	HHJ 20 S 15	20	150	389	467	18
5211100112055	HHJ 30 S 7.5	30	75	226	306	15
5211100112034	HHJ 30 S 15	30	150	362	612	25
5211100112061	HHJ 45 S 15	45	150	388	945	35.5
5211100112081	HHJ 60 S 7.5	60	75	272	636	34.5
5211100112101	HHJ 110 S 7.5	110	75	315	1,155	78.3