

Weld-on lifting point, grade 80

Product information

Weld-on lifting point for all lifting directions. Equipped with a spring that holds the eye in desired position.

[... Read more](#)



Material: Steel

Marking: According to standard, CE-marked

Temperature range: -40°C - (+)200°C

Finish: Painted, yellow

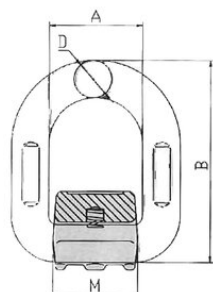
Standard: EN 1677-1

Safety factor: 4:1

Grade: 8

Weld-on lifting point, grade 80

Blueprint



Technical data

Part code	WLL ton	A mm	B mm	D mm	M mm	Weight kg
4215NS8HI1	1.12	41	78.5	13	37	0.4
4215NS8HI2	2	42	88	14	40	0.47
4215NS8HI3	3.15	45	94	17	42.5	0.69
4215NS8HI5	5.3	55	118	22	50	1.46
4215NS8HI8	8	70	141	26.5	66.5	2.5
4215NS8HI15	15	97	188	34	90	5.79
4215NS8HI20	20	149	240	46	125	15.37

WORKING LOAD LIMITS

Product	WLL (t)	WLL (t)	WLL (t)	WLL (t)	WLL (t)	WLL (t)	WLL (t)	WLL (t)
					0 - 45°	45-60°	0 - 45°	45-60°
NS8HI1	1,12	1,12	2,24	2,24	1,57	1,12	2,35	1,68
NS8HI2	2	2	4	4	2,8	2	4,2	3
NS8HI3	3,15	3,15	6,3	6,3	4,41	3,15	6,62	4,73
NS8HI5	5,3	5,3	10,6	10,6	7,42	5,3	11,13	7,95
NS8HI8	8	8	16	16	11,2	8	16,8	12
NS8HI15	15	15	30	30	21	15	31,5	22,5