

## Swivel Eye / Eye Crosby S5

---

### Product information



**Design:** Swivel with eyes equipped with tapered roller thrust bearing.

**Features:**

- Suitable for frequent rotation under load.
- All swivels individually Proof Tested to 2 times the Working Load Limit.
- Pressure lube fitting provided
- Other types and capacities up to 1250 t available on demand.

... [Read more](#)

---

**Marking:** CE-marked

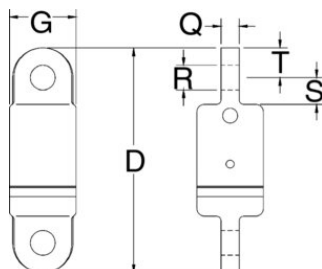
**Note:** Always check before use if your steel wire rope is suitable for use with a swivel.

**Warning:** Not to be used on demolition- (wrecking-) balls!

**Safety factor:** 5:1

## Swivel Eye / Eye Crosby S5

### Blueprint



### Technical data

Part code	WLL ton	Rope Ø mm	Swivel No	D mm	G mm	Q mm	R mm	S mm	T mm	Weight kg
422500300100	3	13	3-S-5	239	70	19.1	26.2	28.4	31.8	3.86
422500500100	5	16	5-S-5	249	76	25.4	32.5	31.8	31.8	5.13
422500850100	8.5	19	8-S-5	302	102	31.8	35.8	41.1	38.1	13.3
422501000100	10	22	10-S-5	394	114	42.9	42.9	70	47.8	19.1
422501500100	15	26	15-S-5	416	127	49.3	51.5	70	54	22.2
422502500100	25	-	25-S-5	565	152	57	58.5	98.5	60.5	59
422503500100	35	-	35-S-5	565	165	57	58.5	98.5	60.5	66
422504500100	45	-	45-S-5	673	178	63.5	64.5	102	76	98