

Portable Davit Crane 5PT10

Product information



544 kg capacity portable Davit Crane

- Load ratings up to 544 kg
- Portable, heaviest component 16,3 kg
- Rugged and affordable
- Manual or power winch operation (E2)
- 360° rotation
- Boom adjustable to meet wide range of height and reach combinations
- Easy, No-Tools Assembly/Disassembly (all individual components less than 16.5 kg)
- Variety of bases
- 2-Year warranty
- Proof of load 125% of WLL (Optional)

Machinery directive: 2006/42/EC as amended by Directive 95/16/EC.

[... Read more](#)

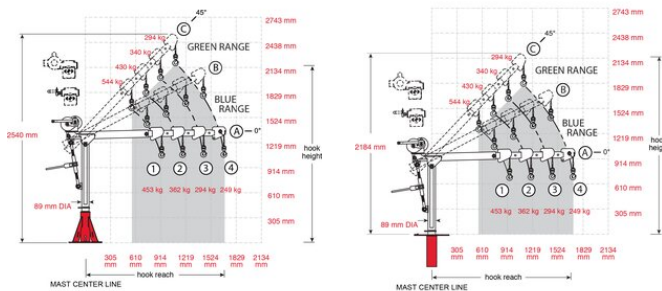
Marking: CE-marked

Finish: Powder coat

Note: Five corrosion-resistant surfaces (powder coating (5PT20), galvanized (5PT20G), stainless 304 (S) and 316 (S316) and three layers of epoxy)

Portable Davit Crane 5PT10

Blueprint



Technical data

Part code	Code	WLL ton	Weight kg
60115PT10	5PT10	0.54	56

Commander 2000, 5PT10 with Pedestal Base

